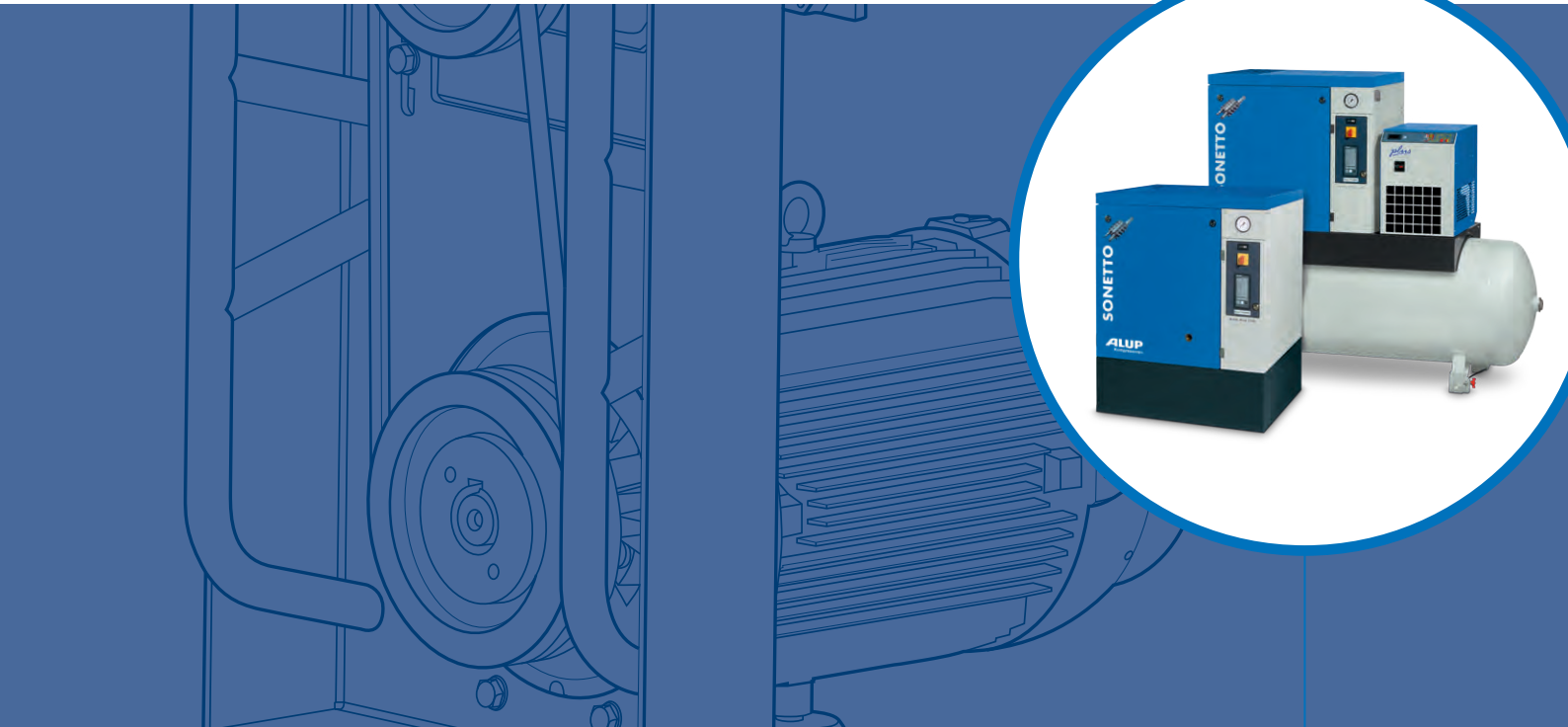


SONETTO

Air Compressors



SONETTO 8-20

ALUP
Kompressoren

Alup

Driven by technology. Designed by experience.

Alup Kompressoren has 90 years of industrial experience. It is our ambition to offer compressed air solutions that ensure we are first in choice for our customers. To reach this goal we continuously invest in our product development to make sure that we are always able to offer:

- High performance and excellent quality
- Integrated engineered solutions
- Full energy efficiency
- Total cost of ownership
- Environmental care

www.alup.com



The power of the Sonetto range

Sonetto screw compressors provide compressed air in an efficient way and operate at a very low noise level thanks to the generous sound insulation. The wide offer of multiple models and configurations will meet all your compressed air needs.

Compact, efficient and simple to use

- Easily installed in the workplace because of limited footprint.
- Straightforward controller for easy operation.

Complete installation

Installed on a tank with dryer, this solution allows you to:

- Save installation costs.
- Reduce risk of air leakages.
- Complete your installation with filters and dryer bypass for high quality air and easy maintenance.

Low noise level

Thanks to its generous sound proof insulation, the Sonetto can be installed in the workplace. This results in:

- Low pressure drop from compressor to air user in order to save energy.
- Lower installation costs due to reduced piping need.
- Lower risk of air leakages.



The range that meets all your requirements

With the Sonetto 8-20 range you obtain an efficient, reliable and complete solution, designed to fit your precise requirements.

A wide offer

- Power size available from 8 up to 20 hp.
- 3 pressure variants.
- The complete range is available installed on an air vessel (270l & 500l) with refrigerant dryers.

Highly efficient air filtration & oil separation

- High level air intake prevents larger dust particles from entering.
- Air intake on the cold part of the compressor ensures an optimal running temperature.
- 2 micron encapsulated filters guarantee that only clean air enters the compressor, improving overall reliability.
- The oil separator ensures less than 3 ppm of oil carry over thanks to cyclonic, gravity and filter separation.

Easy accessibility

- Easy to service thanks to the removable panels.
- Low maintenance costs.
- Easy movement and transport thanks to forklift holes on the floor-mounted models (FM).

The options you need

- External dryers available for all tank-mounted models (TM).
- Dryer pre- and post-filters allow you to improve the air quality.
- Dryer bypass for easy and fast servicing of the dryer without interrupting the production.
- Forklift stirrups for fluent handling of TM units.



Small dimensions, great flexibility

The Sonetto range is available as floor mounted, tank mounted and tank mounted with dryer. The air receiver for the range comes in two capacities: 270 and 500 liter. With this large variety of versions and models, Sonetto sets a new standard for operational power, quality, operation safety, service life and user comfort.

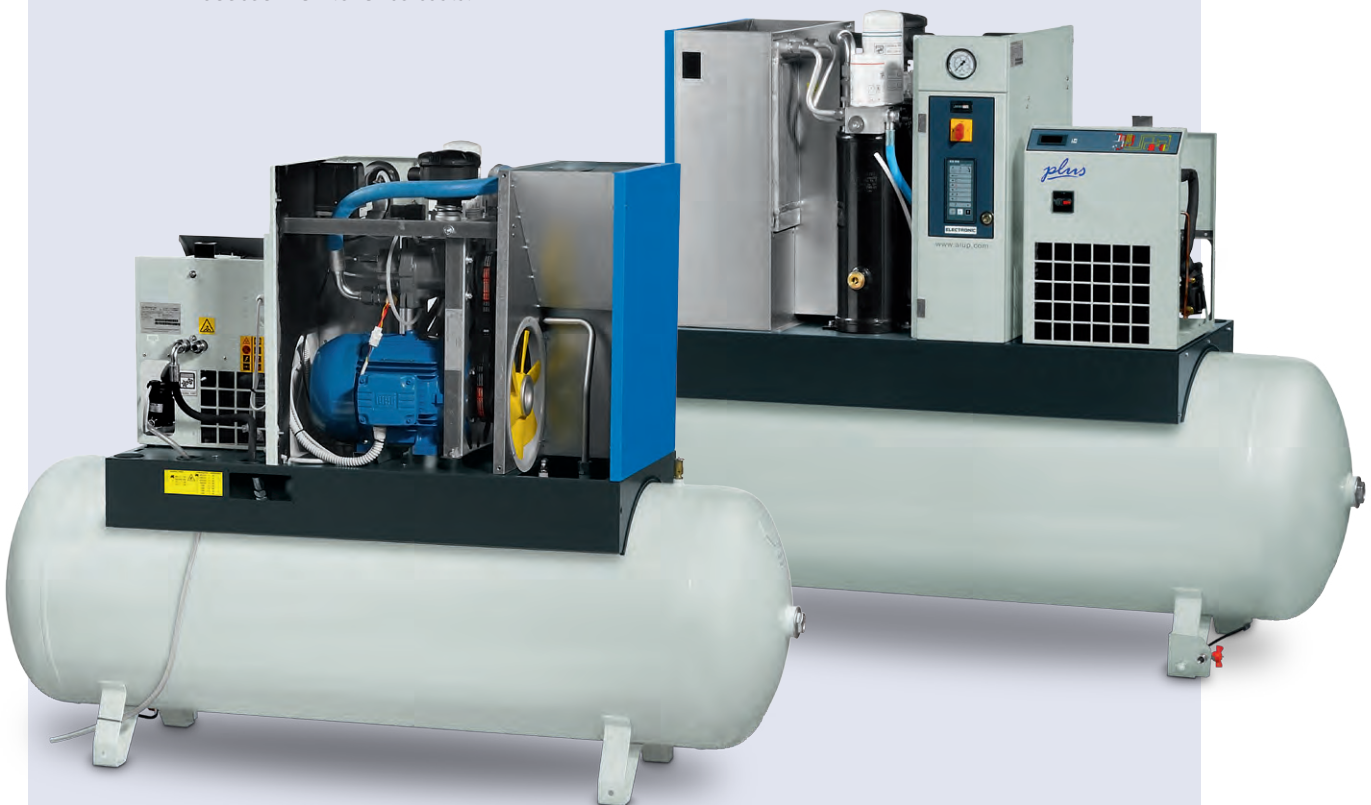
User benefits

Compact design

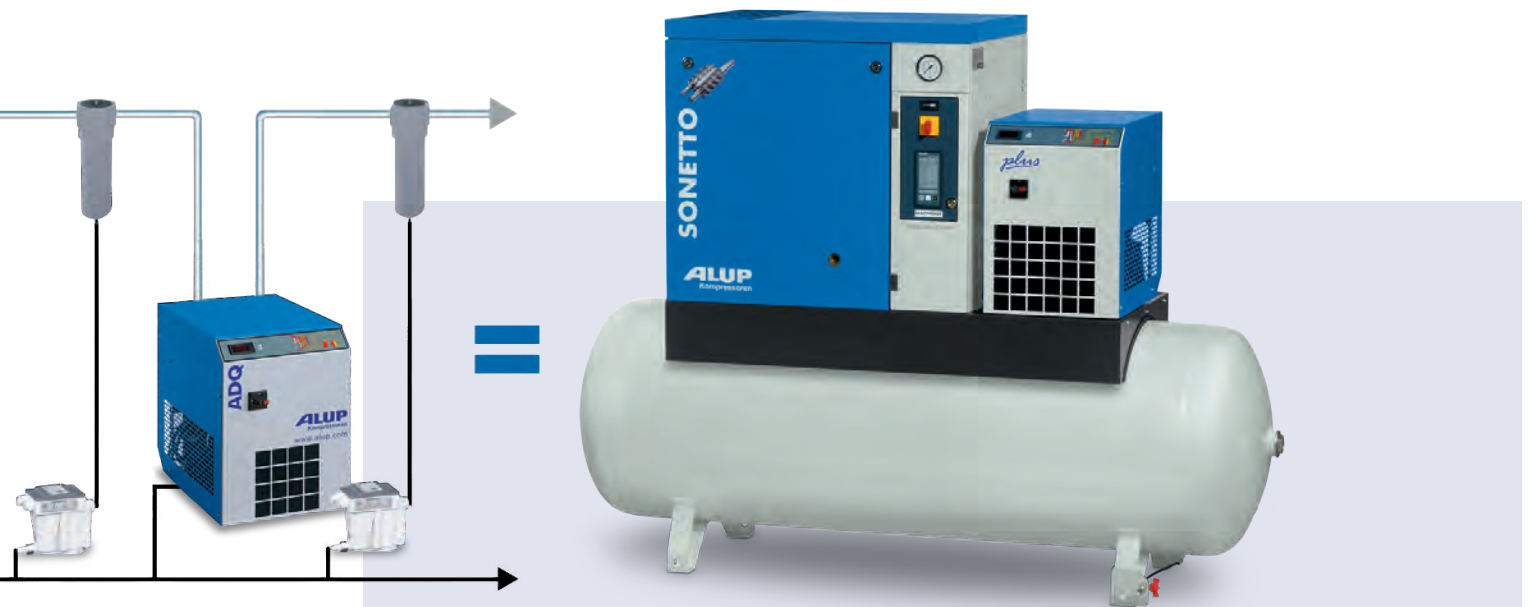
- Space-saving tank-mounted solution.
- The light and compact ADQ refrigerant dryer simplifies your installation and ensures high quality compressed air. The drain allows the removal of condensate without wasting compressed air. This results in significant energy savings.

Safe and fast servicing

- Ideal positioning of maintenance components.
- Reduced maintenance costs.



A complete solution suitable to satisfy your air demand



Improved efficiency

- Highly efficient and well tested air ends grant total peace of mind.
- Reduced energy consumption thanks to Eff1 electric motor class F on insulation, IP55 protection.
- Oil separator designed to ensure minimal pressure drop and oil carry over of less than 3 ppm

User comfort

- Very low noise level allows installation of the machine close to the workplace.
- Easy oil level check via external oil level sight glass.

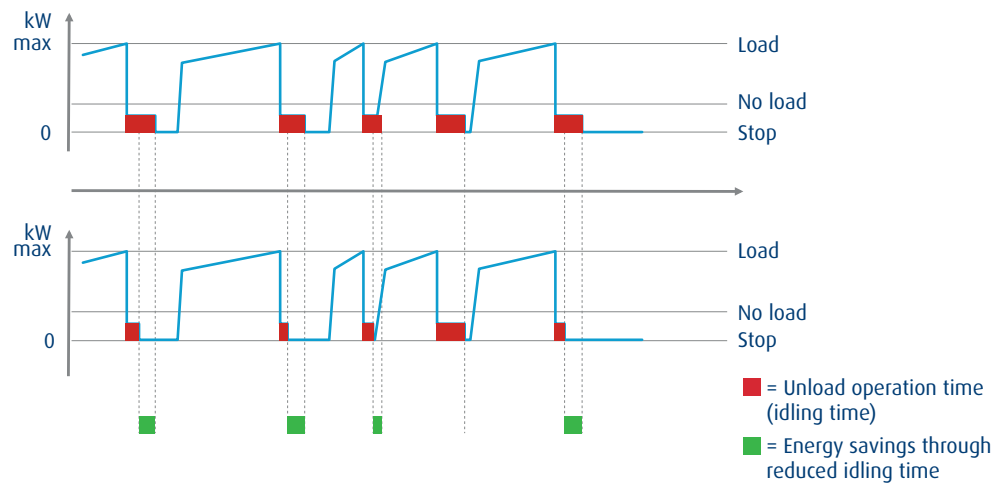


OPTIMIZE YOUR OPERATIONS

ES99: Energy-saving controller

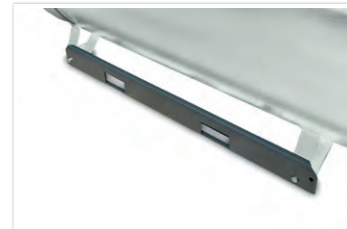


The Alup ES99 offers you a straightforward control panel including a full set of process status messages to simplify daily operation. Moreover, the ES99 software adapts the load-no-load time to the actual compressed air consumption, preventing the electrical motor from running when it is not needed.



Available options

- Thanks to the forklift stirrups, you can easily move and position the Sonetto in the compressor room.
- To improve the air quality, you can complete your installation with pre- and post-coalescing filters. The centralized drain will discharge all the moisture from the filters, dryer and vessel. Thanks to the dryer bypass you can service the dryer without interrupting the compressor and consequently your air plant.
- Food grade oil is the right solution for food and beverage or other applications where oil contamination can threaten the production process.



Technical data

Model	Max. working pressure	Free Air Delivery*			Motor power		Noise level**	Dimensions FM			Weight FM	
		bar	m ³ /min	l/s	cfm	kW		hp	Lenght	Width		Height
Sonetto 8	8	7.5	0.75	12.5	26.5	5.5	7.5	66	810	650	995	156
	10	9.5	0.63	10.5	22.3							
Sonetto10	8	7.5	1.02	17.0	36.1	7.5	10	66	810	650	995	167
	10	9.5	0.92	15.3	32.5							
	13	12.5	0.56	9.3	19.8							
Sonetto 15	8	7.5	1.43	23.8	50.5	11	15	68	810	650	995	180
	10	9.5	1.31	21.8	46.3							
	13	12.5	0.89	14.8	31.5							
Sonetto 20	8	7.5	1.75	29.2	61.9	15	20	69	810	650	995	189
	10	9.5	1.65	27.5	58.3							
	13	12.5	1.19	19.8	42.1							
Sonetto 8 270L	8	7.5	0.75	12.5	26.5	5.5	7.5	66	1533	650	1352	191
	10	9.5	0.63	10.5	22.3							
Sonetto10 270L	8	7.5	1.02	17.0	36.1	7.5	10	66	1533	650	1352	202
	10	9.5	0.92	15.3	32.5							
Sonetto 15 270L	8	7.5	1.43	23.8	50.5	11	15	68	1533	650	1352	215
	10	9.5	1.31	21.8	46.3							
Sonetto 20 270L	8	7.5	1.75	29.2	61.9	15	20	69	1533	650	1352	224
	10	9.5	1.65	27.5	58.3							
Sonetto 8 500L	8	7.5	0.75	12.5	26.5	5.5	7.5	66	1935	650	1483	281
	10	9.5	0.63	10.5	22.3							
Sonetto10 500L	8	7.5	1.02	17.0	36.1	7.5	10	66	1935	650	1483	292
	10	9.5	0.92	15.3	32.5							
	13	12.5	0.56	9.3	19.8							
Sonetto 15 500L	8	7.5	1.43	23.8	50.5	11	15	68	1935	650	1483	305
	10	9.5	1.31	21.8	46.3							
	13	12.5	0.89	14.8	31.5							
Sonetto 20 500L	8	7.5	1.75	29.2	61.9	15	20	69	1935	650	1483	314
	10	9.5	1.65	27.5	58.3							
	13	12.5	1.19	19.8	42.1							
Sonetto 8 270L plus	8	7.5	0.75	12.5	26.5	5.5	7.5	66	1533	650	1352	219
	10	9.5	0.63	10.5	22.3							
Sonetto10 270L plus	8	7.5	1.02	17.0	36.1	7.5	10	66	1533	650	1352	245
	10	9.5	0.92	15.3	32.5							
Sonetto 15 270L plus	8	7.5	1.43	23.8	50.5	11	15	68	1533	650	1352	259
	10	9.5	1.31	21.8	46.3							
Sonetto 20 270L plus	8	7.5	1.75	29.2	61.9	15	20	69	1533	650	1352	277
	10	9.5	1.65	27.5	58.3							
Sonetto 8 500L plus	8	7.5	0.75	12.5	26.5	5.5	7.5	66	1935	650	1483	309
	10	9.5	0.63	10.5	22.3							
Sonetto10 500L plus	8	7.5	1.02	17.0	36.1	7.5	10	66	1935	650	1483	335
	10	9.5	0.92	15.3	32.5							
	13	12.5	0.56	9.3	19.8							
Sonetto 15 500L plus	8	7.5	1.43	23.8	50.5	11	15	68	1935	650	1483	349
	10	9.5	1.31	21.8	46.3							
	13	12.5	0.89	14.8	31.5							
Sonetto 20 500L plus	8	7.5	1.75	29.2	61.9	15	20	69	1935	650	1483	367
	10	9.5	1.65	27.5	58.3							
	13	12.5	1.19	19.8	42.1							

Plus: With tankmounted refrigeration dryer

* Unit performance measured according to ISO 1217, Annex C, latest edition.

** Noise level measured according to ISO 2151 2004.





DRIVEN BY TECHNOLOGY DESIGNED BY EXPERIENCE



**CONTACT YOUR LOCAL
ALUP KOMPRESSOREN
REPRESENTATIVE**

6999640252